

SAFETY INFORMATION

- Follow workshop health & safety rules, regulations and conditions when using the Bearing packer.
- Keep the Bearing packer clean and in good working order for best and safest performance.
- DO NOT use the Bearing packer for a task it is not designed to perform.
- DO NOT drop, throw or abuse the Bearing packer.
- Read and understand all instructions.

PACKAGE CONTENT

DESCRIPTION	QUANTITY
Grease feeder	1
Spring	2
O.I.P.M.	1

INSTALLATION

- Use the dome spring as per your requirement.
- Remove grease fitting from the bearing housing.
- Screw the grease feeder assembly directly into the grease fitting hole. Turn hand tight only.
- Connect a grease gun to the grease fitting fitted on the grease feeder and fill with non-separating grease till the piston reaches the caution line. Fill the grease feeder just above the caution line to remove air pockets.
- Grease feeder unit can be refilled while mounted on the equipment. This should be accomplished before the piston reaches the base. Simply refill by attaching the grease gun to the grease fitting and fill until the piston rises to the bottom edge of the caution label. Do not overfill as overfilling can cause over-pressure which can result in top separating

from base which can cause serious head or eye injury. For refilling hard to reach applications, use remote refilling kit.

MAINTENANCE & CLEANING

- Grease feeders require minimum maintenance for providing long trouble free service.
- The transparent dome should be kept clean and free from external dirt so that grease levels can always be seen.
- Most of the external dirt can be easily cleaned with any mild detergent.
- Grease fitting should be wiped properly before and after filling the grease.
- Special care should be taken in extremely dirty and harsh environment and frequent cleaning should be done to ensure long life.

RECOMMENDED USE

For use with NLGI 0 to 4 non separating grease on any equipment that

- Has anti friction, oscillating or roller bearings
- Has shielded bearings with seals
- Has bronze, olite or open bearings
- Requires bearing flushing action

WARNING!

Don't over pressurize the spring as it can result in top separating from the base which can cause serious head or eye injury.

TYPES OF SPRINGS

In PP, PA, PAN Series

Blue: Included in pack (Light Duty)

Silver: Comes as pre-installed (Medium Duty)

Red: Included in pack (Heavy Duty)

In BA Series

Green: Comes as pre-installed (Medium Duty)

Yellow: Included in pack (Heavy Duty)

SIZE SELECTION GUIDE

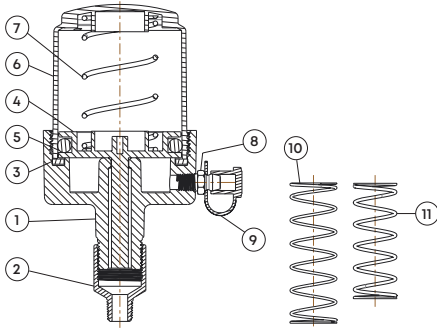
BEARING SHAFT DIA.	UPTO 1-1/2" (38 MM)				1-1/2" (38 MM) & OVER			
OPERATING CONDITION	INTERMITTENT		CONTINUOUS		INTERMITTENT		CONTINUOUS	
CLASS OF BEARING	OPEN	SEALED	OPEN	SEALED	OPEN	SEALED	OPEN	SEALED
Under 1000 RPM	1 oz. (28.5 gm)	1 oz. (28.5 gm)	1 oz. (28.5 gm)	1 oz. (28.5 gm)	2 oz. (57 gm)	2 oz. (57 gm)	2 oz. (57 gm)	2 oz. (57 gm)
1000 to 2500 RPM	1 oz. (28.5 gm)	1 oz. (28.5 gm)	1 oz. (28.5 gm)	1 oz. (28.5 gm)	2 oz. (57 gm)	2 oz. (57 gm)	6 oz. (171 gm)	6 oz. (171 gm)
Over 2500 RPM	2 oz. (57 gm)	1 oz. (28.5 gm)	2 oz. (57 gm)	2 oz. (57 gm)	6 oz. (171 gm)	6 oz. (171 gm)	6 oz. (171 gm)	6 oz. (171 gm)

SPRING SELECTION GUIDE

OPERATING TEMPERATURE		NLGI GREASE TYPE				
FROM	TO	NO. 0	NO. 1	NO. 2	NO. 3	NO. 4
-23°C (-10°F)	4°C (40°F)	Light	Medium	Heavy		
4°C (40°F)	43°C (110°F)	Light	Medium	Medium	Heavy	
43°C (110°F)	93°C (200°F)		Light	Medium	Medium	Heavy
93°C (200°F)	121°C (250°F)			Light	Medium	Heavy

EXPLODED VIEW

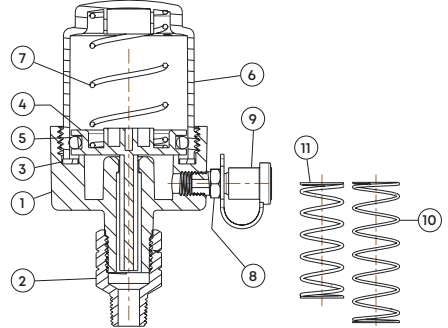
Polycarbonate Bowl & Base



PARTS LIST

SR. NO	PARTS DESCRIPTION	QTY.
1	Head	1
2	Adaptor	1
3	Washer	1
4	Piston	1
5	O-Ring	1
6	Container	1
7	Spring	1
8	Straight Lubrication Fitting	1
9	Grease Fitting Cap	1
10	Spring	1
11	Spring	1

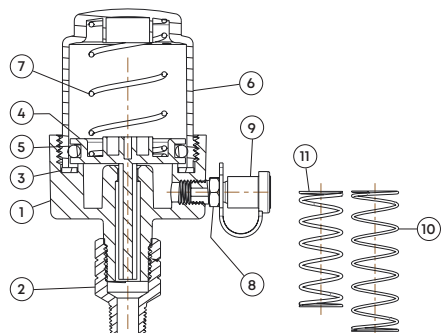
Polycarbonate Bowl & Aluminium Base



PARTS LIST

SR. NO	PARTS DESCRIPTION	QTY.
1	Head	1
2	Adaptor	1
3	Washer	1
4	Piston	1
5	O-Ring	1
6	Container	1
7	Spring	1
8	Straight Lubrication Fitting	1
9	Grease Fitting Cap	1
10	Spring	1
11	Spring	1

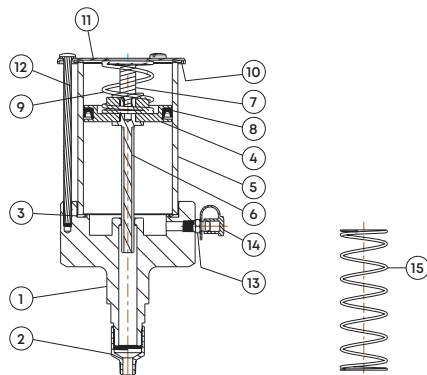
Polycarbonate Bowl & Nickel Plated Aluminium Base



PARTS LIST

SR. NO	PARTS DESCRIPTION	QTY.
1	Head	1
2	Adaptor	1
3	Washer	1
4	Piston	1
5	O-Ring	1
6	Container	1
7	Spring	1
8	Straight Lubrication Fitting	1
9	Grease Fitting Cap	1
10	Spring	1
11	Spring	1

Borosilicate Bowl & Aluminium Base



PARTS LIST

SR. NO	PARTS DESCRIPTION	QTY.
1	Head	1
2	Adaptor	1
3	Washer	1
4	Piston	1
5	Tube	1
6	Guide (Piston)	1
7	Adaptor (Piston)	1
8	Seal (Viton)	1
9	Spring	1
10	Washer	1
11	End Cap	1
12	Screw	3
13	Straight Lubrication Fitting	1
14	Grease Fitting Cap	1
15	Spring	1





GROZ WARRANTY POLICY

Groz makes all efforts to ensure that its products meet the highest standards of quality and durability and warrants to the original purchaser its range of products for a period of 12 months from Groz Invoice date, against defects in materials and workmanship. If the Groz product is part of a set, only the portion that is defective is subject to this warranty.

This warranty does not apply to damage due directly or indirectly, to misuse, abuse, wear and tear, negligence or accident, repairs or alterations outside Groz plants, or to lack of maintenance. Groz shall in no event be liable for death, injuries to persons or property or for incidental, contingent, special or consequential damages arising from the use of its products. It is upto the user to determine suitability and safety of the product for their intended use, and the user assumes all risks and liability herewith.

In no event, shall Groz's liability exceed the invoiced cost of the product. In case of identification of defect covered under this warranty, the same must be notified in writing to Groz /Groz designated authorized service location. Proof of purchase date must accompany the complaint. Groz reserves the right to call back the faulty unit, all charges including transportation prepaid. On verification of the defect, the unit will be repaired or replaced with a new or reconditioned product or part of equal utility or a full refund given at Groz's discretion. The repaired /replaced units will be returned to the user freight prepaid, using most economical freight carrier. However if determined that the defect resulted from causes not within the scope of the warranty, then the cost of returning the product would be to buyer's account.

Groz Engineering Tools Pvt. Ltd. Groz Net Industries

Village Kherki Daula, National Highway-8,
Gurugram-122001, Haryana, INDIA

Tel +91.124.282.7700

E-Mail info@groz-tools.com

Url www.groz-tools.com

The GROZ name, GROZ logo and the  mark are trademarks of GROZ Engineering Tools Pvt. Ltd., India