

Electric Drum Pump

EDR-55

Worlds 1st Rechargeable Battery Operated Pump.

Designed for pumping fuels, water based media, light oils, DEF & select chemicals from metal drums & IBC / Totes

Compact & lightweight construction

Convenient ON/OFF switch with LED indicator

Built-in fuse for overload protection

Silenced motor makes almost no noise

Telescopic suction tube extends from 33-1/2" (850 mm) to 49" (1245 mm) for use with 205 litre (55 gallon) drums or 275-330 gallon (1000-1250 litre) IBC / Totes

Stainless steel filter built into the suction tube inlet prevents contaminants from getting in & causing damage

Built-in 2" bung adaptor fits directly on 205 litre (55 gallon) metal drums. Bung adapter can be adjusted by 0.6" (15 mm) to adjust to drums with varying heights

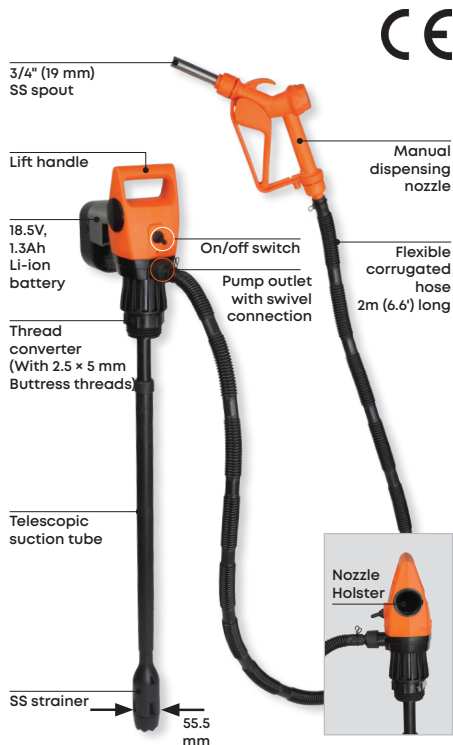
Includes an additional bung thread converter for converting 2" standard bung threads to 2.5" x 5 mm buttress for using pump with IBC / Totes

Duty Cycle

15 minutes ON / 15 Minutes OFF

WETTED COMPONENTS

Viton, POM, Stainless Steel, PE, NBR, PP



CAT NR.	ORD NR.	DESCRIPTION	FLOW RATE (UPTO)	
			(LPM)	(GPM)
EDR/55T/DC	45503	Electric Drum Pump with DC Power Cable (12V)	18.4	4.86
EDR/55T/AC/US	45504	Electric Drum Pump with UL Listed AC Power Adapter, US Socket	18.9	5
EDR/55T/AC/EU	45505	Electric Drum Pump with CE AC Power Adapter, European Socket	18.9	5
EDR/55T/AC/AU	45506	Electric Drum Pump with AC Power Adapter, AU Socket	18.9	5
EDR/55T/AC/UK	45517	Electric Drum Pump with AC Power Adapter, UK Socket	18.9	5
EDR/55T/RB/19L/US	45516	Electric Drum Pump with Battery Adapter, one 18.5V, 1.3 Ah Li-Ion Rechargeable battery & Battery Charger, US Socket	28	7.4
EDR/55T/RB/19L/EU	45515	Electric Drum Pump with Battery Adapter, one 18.5V, 1.3 Ah Li-Ion Rechargeable battery & Battery Charger, EU Socket	28	7.4
EDR/55T/RB/19L/UK	45519	Electric Drum Pump with Battery Adapter, one 18.5V, 1.3 Ah Li-Ion Rechargeable battery & Battery Charger, UK Socket	28	7.4

SPECIFICATIONS

Motor Type	DC Brush Motor (5 Pole)
DC Power Cable	4M long with Crocodile Clips
AC Power Adapter	Input: 100 to 240 V AC, 50 / 60 Hz, Output: 12 V DC Constant Voltage, 3A max
Rechargeable Battery	18.5V, 1.3Ah Li-Ion Rechargeable Battery
Max. Viscosity of Media	100 cst
Temperature	5°C to 40°C (41°F to 104°F)

SAFETY INFORMATION

- Follow workshop health & safety rules, regulations and conditions when using the Pump.
- During their period of use, accessories must be checked for wear, cracks and other damage, replace any damaged or worn parts.
- Use genuine parts only. Unauthorized parts may be dangerous and will void the warranty.
- Wear approved safety gloves and eye and ear protection.
- Keep the Nozzle clean and in good working order for best and safest performance.

WARNING!

- DO NOT use the pump for a task it is not designed to perform.
- DO NOT drop, throw or abuse the pump.
- DO NOT carry the pump by hose.
- Read and understand all instructions. Failure to follow all instructions listed above may result in electric shock, fire and/or serious injury.

PACKAGE CONTENT

DESCRIPTION	QUANTITY
Pump assembly	1
Hose with nozzle	1
Battery	1
Charger	1
O.I.P.M.	1

INSTALLATION

- Insert the Pump into the Drum through the Drum Hole.



- Screw the Bung adaptor with the Drum hole.

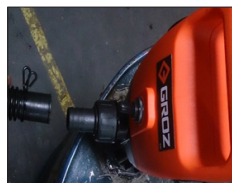


Note: Buttress thread adaptor can be used with 2.5" x 5mm thread IBC's.

- Clamp the hose with the nozzle using the Hose clamp.



- Clamp the other end of the Hose with the outlet Hose borb on the pump outlet.



- Place the Nozzle inside the Nozzle Holster provided on the side of the pump.



DC CONNECTION (ONLY IN DC VERSION)

- Connect the plug provided with the DC battery cable to the socket present at the back of the pump body.
- Connect the Crocodile Clips in red with the +ve terminal and the one in black with the -ve terminal of the battery.
- Turn the toggle switch to 'ON' position to start the pump.



WARNING!

The pump must not be used with 24V DC supply to avoid any damage or accidents

AC CONNECTION (ONLY IN AC VERSION)

1. Connect the AC power cord with the adaptor and then connect the AC power adaptor with the pump socket.



2. Plug the power cord into the AC supply socket and switch it 'ON'.
3. Turn the toggle switch to 'ON' position to start the pump.

Note: The pump can be used with 110V or 220V AC supply.

BATTERY CONNECTION (ONLY IN BATTERY VERSION)

1. Connect the Battery holder plug with the pump socket and mount the Battery holder on to the pump by screwing the holder into the pump body. (Refer to Exploded View point 50 & 51)



2. Push a fully charged battery into the Battery holder.



Note: Press the side buttons on the battery while removing it or else it will not come out.

3. Turn the toggle switch to 'ON' position to start the pump.

OPERATION

1. Pull out the Nozzle from the Nozzle Holster



2. Place the Nozzle into the receiving container to transfer the liquid.



3. Switch On the Toggle switch (Up) and pull the Nozzle Trigger.



4. After Dispensing Switch Off the Toggle switch (Down) and lift the Nozzle upward allowing all the liquid in the line to flow back into the Drum.

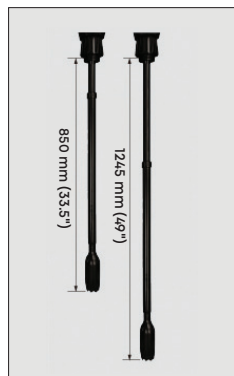


5. Place the Nozzle back into the Holster to prevent any damage to the Hose or to the Nozzle.



HOW TO EXTEND TELESCOPIC SUCTION TUBE ?

1. Rotate the joint nut anti clockwise and then pull the strainer end of the suction tube away from the bung.
2. After extending the suction tube rotate the joint nut clockwise to fix the suction tube in the extended position.



HOW TO CHARGE THE PUMP BATTERY ?

1. Push the Battery inside the charger as shown in the picture



Note: Press the side buttons on the battery while removing it or it will not come out.

2. Connect the charger to the power supply and switch it 'ON'
3. **For Li-Ion Battery**
 - a. At the time of charging both lights remain steady.



- b. When battery is fully charged, only green light remain steady and red light turns off.



4. **For Ni-Cd Battery**

- a. At the time of charging Green light remain steady with red light blinking.



- b. When battery is fully charged, both lights remain steady.



WARNING!

Ni-Cd battery must be fully discharged before it is recharged again.

HOW TO REPLACE THE FUSE ?

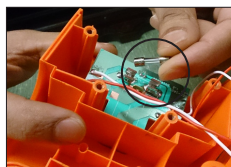
1. Remove the Hose Barb from the Outlet.



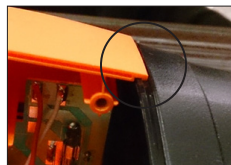
2. Unscrew all the bolts to Remove the Hose Barb from the Outlet.



3. Replace the older fuse with a new one.



4. Upper body must be perfectly seated while assembling the pump again.



5. Make sure that the Nozzle holster is perfectly seated as shown in the picture.

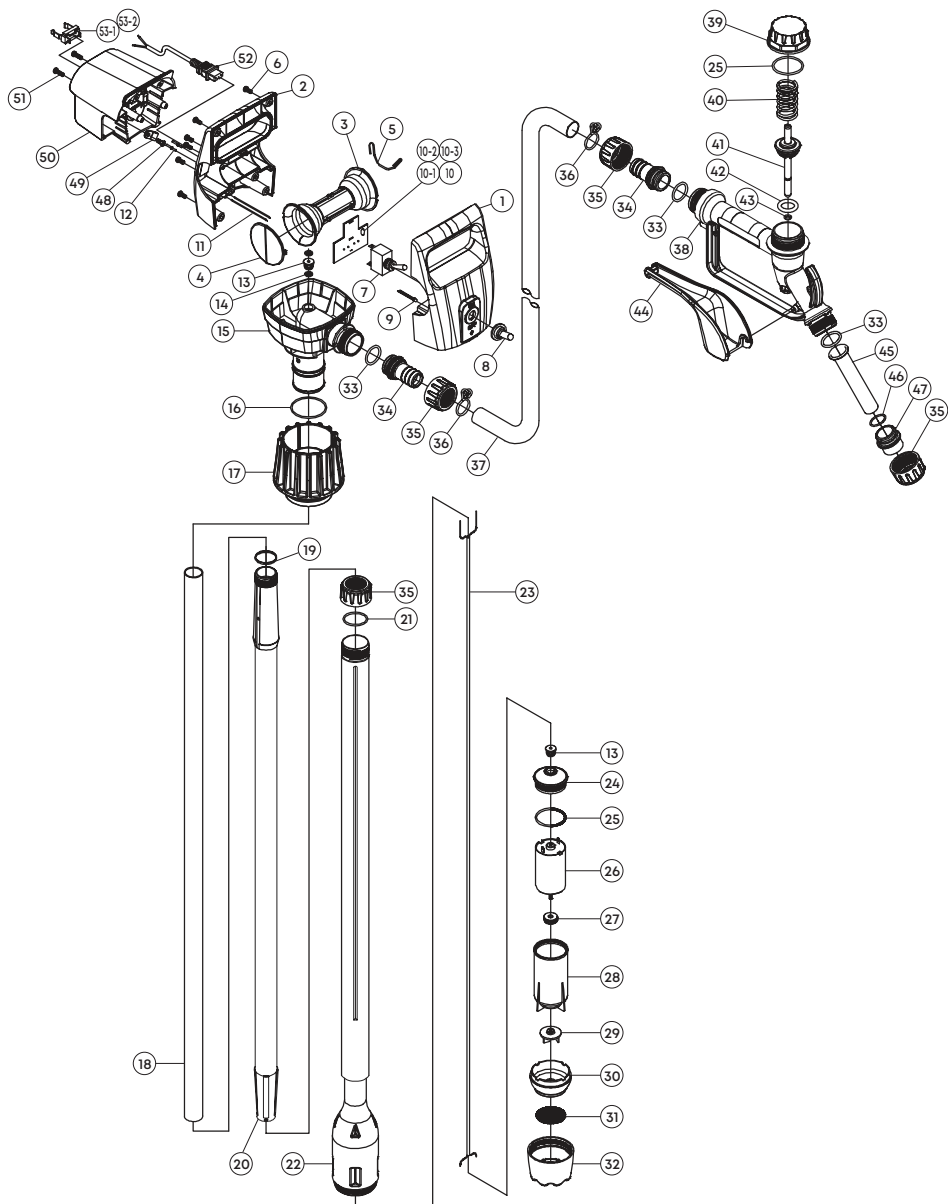


6. Screw all the bolts to assemble the pump.



7. Screw back the Hose barb onto the outlet.

EXPLODED VIEW



PARTS LIST

REF NO.	PARTS DESCRIPTION	QTY.
1	Front Cover	1
2	Back Cover	1
3	Nozzle Holder	1
4	Holder Cover	1
5	Nozzle Hook	1
6	Screw	6
7	Toggle Switch	1
8	Waterproof Cap	1
9	LED Lamp	1
10	PCB Assembly	1
10-1	Resistor	1
10-2	Fuse Holder	2
10-3	Fuse	1
11	Connector Wire	2
12	Connector Pin	2
13	Motor Wire Packing	2
14	Wire Clamp	2
15	Body	1
16	O-ring (Body)	1
17	Drum Bung Adapter	1
18	Inner Pipe	1
19	Suction Pipe Packing	1
20	Suction Pipe (Upper)	1
21	O-ring (Pipe)	1
22	Suction Pipe (Lower)	1
23	Motor Wire	1
24	Motor Cover	1
25	O-ring (Motor Cover, Handle)	2
26	Motor	1

REF NO.	PARTS DESCRIPTION	QTY.
27	Motor Packing	1
28	Motor Case	1
29	Impeller	1
30	Impeller Casing	1
31	Filter	1
32	End Cap	1
33	O-ring (Hose Adapter, Spout)	3
34	Hose Adapter	1
35	Joint Nut	3
36	Hose Clamp	2
37	Discharge Hose	1
38	Handle	1
39	Nozzle Cap	1
40	Nozzle Spring	1
41	Nozzle Piston	1
42	O-ring (Piston L)	1
43	O-ring (Piston S)	1
44	Nozzle Lever	1
45	Spout (Stainless Steel)	1
46	O-ring (Stainless Nozzle)	1
47	Spout Adapter	1
48	Screw	1
49	Cable Clamp	1
50	Battery Adapter	1
51	Screw	2
52	Cable Connector	1
53-1	Terminal	1
53-2	Terminal Bracket	1

TROUBLESHOOTING

PROBLEM	CAUSE	SOLUTION
Pump not creating suction	Strainer clogged	Clean the strainer
Pump not working	<ol style="list-style-type: none"> 1. Wire damaged inside the pump. 2. Electricity supply problem 3. Fuse damaged 4. AC adaptor not working (only in AC version) 5. Battery not charged (only in Battery version) 6. Motor not working 	<ol style="list-style-type: none"> 1. Send the pump to the service centre. 2. Check the electricity supply. 3. Replace the Fuse. 4. Replace the AC adaptor. 5. Fully recharge the Battery. 6. Send the pump to the service centre
Fluid not coming out of the Nozzle	Nozzle or the Hose may be blocked	Clean or replace the Nozzle or the Hose.
Leakage in Hose	Hose Damaged	Cut the Hose from the next slot and use again.

DISPOSAL

The components or the used products must be given to companies that specialize in the disposal and recycling of industrial waste.



GROZ WARRANTY POLICY

Groz makes all efforts to ensure that its products meet the highest standards of quality and durability and warrants to the original purchaser its range of products for a period of 12 months from Groz Invoice date, against defects in materials and workmanship. If the Groz product is part of a set, only the portion that is defective is subject to this warranty.

This warranty does not apply to damage due directly or indirectly, to misuse, abuse, wear and tear, negligence or accident, repairs or alterations outside Groz plants, or to lack of maintenance. Groz shall in no event be liable for death, injuries to persons or property or for incidental, contingent, special or consequential damages arising from the use of its products. It is upto the user to determine suitability and safety of the product for their intended use, and the user assumes all risks and liability herewith.

In no event, shall Groz's liability exceed the invoiced cost of the product. In case of identification of defect covered under this warranty, the same must be notified in writing to Groz /Groz designated authorized service location. Proof of purchase date must accompany the complaint. Groz reserves the right to call back the faulty unit, all charges including transportation prepaid. On verification of the defect, the unit will be repaired or replaced with a new or reconditioned product or part of equal utility or a full refund given at Groz's discretion. The repaired /replaced units will be returned to the user freight prepaid, using most economical freight carrier. However if determined that the defect resulted from causes not within the scope of the warranty, then the cost of returning the product would be to buyer's account.

Groz Engineering Tools Pvt. Ltd. Groz Net Industries

Village Kherki Daula, National Highway-8,
Gurugram-122001, Haryana, INDIA

Tel +91.124.282.7700

E-Mail info@groz-tools.com

Url www.groz-tools.com

The GROZ name, GROZ logo and the  mark are trademarks of GROZ Engineering Tools Pvt. Ltd., India