

Hand Bearing Packer

BEP-10

Light-weight and handy, portable Bearing Packer

Mess and hassle free solution for quick removal of old grease and replacement with new grease

Designed for use on bearings with:

- Minimum dia. of 1-3/4" (45mm)
- Maximum dia. 3-1/2" (90 mm)

Using the bearing packer

Simple hand press mechanism eliminates the need for any grease gun or pump to grease the bearing

Useful for greasing bearings in cars, boats, tractors, RV's etc



Place bearing on piston
Maximum bearing dia.
3-1/2" (90mm)



Press the cap until the old grease is forced out and new grease shows on the bearing

USEFUL TIPS!

Always use recommended grade of grease. Some grades of grease cannot handle temperature of wheel bearing applications

Do not use compressed air for cleaning the bearing prior to use with the bearing packer. This is unsafe and could damage the race

CAT NR.	ORD NR.
BEP/10	44940



Cap protects grease from contaminants

SAFETY INFORMATION

- Follow workshop health & safety rules, regulations and conditions when using the bearing packer.
- During their period of use, accessories must be checked for wear, cracks and other damage.
- Use genuine parts only. Unauthorized parts may be dangerous and will void the warranty.
- Wear approved safety gloves and eye and ear protection.
- Keep the bearing packer clean from contamination and in good working order for best and safest performance.

WARNING!

- DO NOT use the bearing packer for a task it is not designed to perform.
- DO NOT drop, throw or abuse the bearing packer.
- DO NOT use bearing packer if damaged or thought to be faulty.

PACKAGE CONTENT

DESCRIPTION	QUANTITY
Bearing Packer	1
O.I.P.M.	1

INSTALLATION

(Refer "EXPLODED VIEW")

- Remove the dust cover (6) from the top of the container (1).



- Fill the container (1) with Grease (NLGI-2)
There are two methods of filling grease into the container (1).

Bulk filling

- Remove the pusher (7) and piston (2).



- Fill the container (1) with grease using a spatula up to the marked level on the container (1).



- Reassemble the piston (2) & pusher (7) onto it until it comes in contact with the grease.



Grease Gun/pump Filling

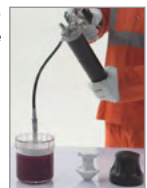
- Unscrew the pusher (7) & take it out.



- Connect the grease coupler to the grease fitting (4) provided at the top of the Piston (2), press the grease coupler straight onto the grease fitting (4) to form a snug fit.



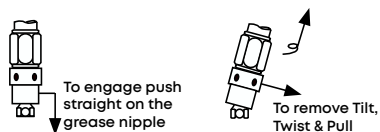
- Start operating the grease gun/pump with the grease coupler as aligned to the grease fitting (4) as possible.



- Once grease reaches up to the marked level, slightly tilt the grease coupler, twist and pull back.



- e. The tilt and twist action will allow easy removal of the grease coupler from the grease fitting (4).



OPERATIONS

1. Remove pusher (7) & put the bearing on the piston (2).



2. Place the pusher (7) on the bearing.



3. Push the bearing down with the help of pusher (7) until the old grease is forced out and new grease shows on the bearing.



4. When greasing has been done of the Bearing, take it out and put the pusher (7) and dust cover (6) back on the container (1).



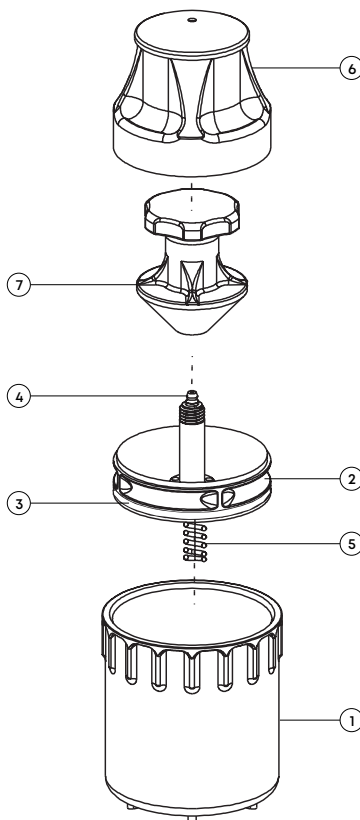
Note : While pushing the bearing down, make sure it is as straight as possible.

MAINTENANCE

(Refer "EXPLODED VIEW")

- Bearing packer should be kept clean from contamination and checked for damage before each use.

EXPLODED VIEW



PARTS LIST

REF. NO.	DESCRIPTION	QUANTITY
1	Container	1
2	Piston	1
3	O-Ring	1
4	Grease Fitting	1
5	Spring	1
6	Dust Cover	1
7	Pusher	1



GROZ WARRANTY POLICY

Groz makes all efforts to ensure that its products meet the highest standards of quality and durability and warrants to the original purchaser its range of products for a period of 12 months from Groz Invoice date, against defects in materials and workmanship. If the Groz product is part of a set, only the portion that is defective is subject to this warranty.

This warranty does not apply to damage due directly or indirectly, to misuse, abuse, wear and tear, negligence or accident, repairs or alterations outside Groz plants, or to lack of maintenance. Groz shall in no event be liable for death, injuries to persons or property or for incidental, contingent, special or consequential damages arising from the use of its products. It is upto the user to determine suitability and safety of the product for their intended use, and the user assumes all risks and liability herewith.

In no event, shall Groz's liability exceed the invoiced cost of the product. In case of identification of defect covered under this warranty, the same must be notified in writing to Groz /Groz designated authorized service location. Proof of purchase date must accompany the complaint. Groz reserves the right to call back the faulty unit, all charges including transportation prepaid. On verification of the defect, the unit will be repaired or replaced with a new or reconditioned product or part of equal utility or a full refund given at Groz's discretion. The repaired /replaced units will be returned to the user freight prepaid, using most economical freight carrier. However if determined that the defect resulted from causes not within the scope of the warranty, then the cost of returning the product would be to buyer's account.

Groz Engineering Tools Pvt. Ltd. Groz Net Industries

Village Kherki Daula, National Highway-8,
Gurugram-122001, Haryana, INDIA

Tel +91.124.282.7700

E-Mail info@groz-tools.com

Url www.groz-tools.com

The GROZ name, GROZ logo and the  mark are trademarks of GROZ Engineering Tools Pvt. Ltd., India