

## Center Square

CS

An extremely useful tool for the machinist on the lathe or the tool maker at the bench for locating centers of round stocks /parts quickly and easily

Knife edge is manufactured from spring steel

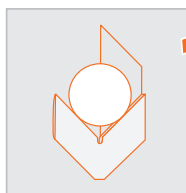
Hardened and precisely ground for extended life



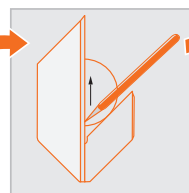
### ORDERING INFORMATION

CAT NR.	ORD NR.	WORK DIAMETER		BOX QTY.
		(INCH)	(MM)	
CS/1	03521	1-1/2	38	-
★ CS/2	03522	3	75	50

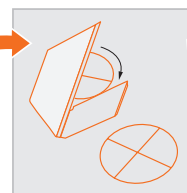
★ Best Seller



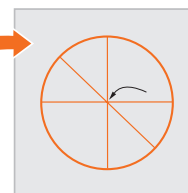
Position the Center Square Vee's on the round stock near the end face



Scribe a line on this end face, guided by the knife edge blade



Rotate the Center Square to two more positions, and scribe



Perfect centering of the knife edges ensure that the three scribed lines meet at a common point.